



Congregation Anshe Sholom

Kol Sholom



JANUARY/FEBRUARY 2021

TEVET/SHVAT/ADAR ■ 5781



The Voice of Peace

TABLE OF CONTENTS

Rabbi's Message	2
President's Perspective	3
Message From The Sisterhood	4
A Torah Minute	7
Donations	7
January Calendar	10
February Calendar	11
Our Sponsors	12

SAVE THESE DATES

Tu B'Shevat Jan. 28th
 Purim Feb. 25-26th

Wishing all a
 happy, healthy

2021



פורים מגיע! PURIM IS COMING!



FROM THE RABBI'S STUDY



Dear friends,

I write this message on a day when several of our congregants received their first COVID vaccine shots. Among our members are numerous front-line physicians who have worked tirelessly over the past ten months to treat dangerously ill and infectious patients. We thank them for their service and are happy to see them be among the first Americans inoculated with the vaccine. A few of our members have asked me if there is an appropriate prayer to recite upon being administered the vaccine.

There are several very good liturgical options:

1) The most obvious choice is the **שהחינו** blessing, in which we thank God for having sustained our lives so that we might reach this auspicious moment. Considering the pandemic's terrible death toll, we really do have to be grateful simply to be alive. Moreover, the blessing ends with the words **לזמן הזה**, "to this moment." I do believe that people will long remember the moment they received the shot in the arm that allowed them to transition back to a state of normalcy. Accordingly, a blessing that highlights significance of the moment is an apt choice to express one's inner emotions.

2) Another possible liturgical selection is the **הטוב והמיטיב** blessing, a prayer stating that God is good and does good for us. The Talmud teaches that whereas **שהחינו** is appropriate for situations in which only the person making the blessing benefited, **הטוב והמיטיב** is appropriate when multiple people are simultaneously the beneficiaries of God's beneficence. Since the vaccine not only benefits the person receiving the shot, but also helps put an end to the broader pandemic adversely affecting all of us, arguably **הטוב והמיטיב** is the proper way to say thanks to the Almighty.

3) Some rabbinic authorities are reluctant to countenance the recitation of a formal blessing, inclusive of the **ברוך אתה יי**, for circumstances not mentioned in the classical literature. Of course, vaccines were unknown in centuries past. According to this school of thought, it would be best to recite a non-statutory prayer, whether Psalm 150, Nishmat Kol Chai, or some new liturgical composition written special for the occasion.

Personally, I favor **שהחינו**, as it will have the deepest resonance among the widest swath of Jewry.

As we look forward toward 2021 with a glimmer of hope and with a light at the end of the dark tunnel, let us think about

those activities we missed in the past year and to which we optimistically hope to return in the coming year. In the realm of synagogue life, those include: communal Kiddush (especially the Men's Club variety), Seudah Shlishit in the Goldman Room, in-person classes, Sisterhood Mishloach Manot, the congregational Seder, Tikkun Leil Shavuot, and much more.

The pandemic is still far from over and we must be vigilant in the coming few months before our area achieves widespread vaccination. Some of the above items might still be beyond our grasp for 2021, but it is certainly nice to dream.

In the meantime, for those who are comfortable doing so, please help us maintain our daily and Shabbat minyanim. Your presence is significant and much appreciated.

Best wishes for health and well-being,
Rabbi Evan Hoffman

Congregation Anshe Sholom

is saddened by the untimely passing of **Cantor Daniel Gildar**, pianist and accompanist extraordinaire. Anshe Sholom was privileged to have had Danny as the accompanist at our cantorial concerts for many years. He was a prodigious talent and the accompanist of choice in the cantorial world. His passing leaves a great void in the world of cantorial music.



May his memory be for a blessing
יהי זכרו ברוך



— Become A —
SPONSOR

We Welcome Sponsorships
for the Rabbi's Weekly

Thoughts on the Parashah
in honor or in memory of a loved one.

THE PRESIDENT'S PERSPECTIVE



Dear Friends,

We complete another calendar year and enter a new one together with those around us, along with all humankind. The past year was very difficult indeed, and we have hopes for better days ahead. With coronavirus vaccines being distributed, perhaps we can anticipate an end to the pandemic and the disruptions that it has caused. We have been brave and steadfast in our commitment to each other, and our community has remained strong. Still, we yearn to pray, learn, celebrate, sing, eat, laugh, and sometimes even cry together in a way less burdened by the restrictions that are still in effect.

Despite the pandemic, we completed a cycle of holidays in 2020 from Purim through Chanukah with innovation and dedication. These changes happened rapidly and we didn't have much choice, yet they allow us to be connected in new ways that will continue to help us into the future. January and February are the coldest months of the year, and it can be very difficult to get out of the house, but we have virtual classes and davening that we never had before. Hopefully, these technological blessings will foster even greater participation as a community during these dark and cold days of winter. For those who are able, we request and encourage you to come to Shul for prayer. Our minyan still needs ten men physically present. This can be difficult to achieve during the winter, even in normal times. We will continue to practice social distancing and mask use at Shul until further notice.

Along with pandemic associated strife, our country has gone through one of the most contentious years in recent memory. From violent protests against systemic racial injustice, to angry political disagreement leading to entrenchment and intransigence, our country has all but been torn apart. The fractures are pervasive, and in the spirit of Tikun Olam, we must work to heal them. Open-mindedness and patience will help us listen to opinions that differ from our own, and facilitate understanding of other perspectives. We also should be able to offer our own position, within reason, without fear of isolation, censure, and social pressure to capitulate. Our dialogue must change in form, and be mitigated by justice, sustainability, peace and love. Hopefully we will look back with '20/20 vision' on the past year, and discern this as a difficult time—but one not without blessings.

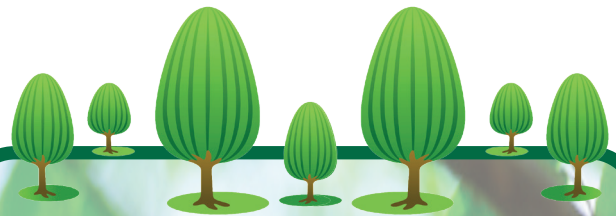
We are happy to report that Congregation Anshe Sholom remains financially stable, with essentially no debt, and good

assets. Still, operations are basically balanced by revenue. We are grateful for your generosity in the past, and request that you consider a donation to our beloved Shul. Please keep in touch and watch for announcements regarding programming for Tu B'Shvat, the month of Adar, and Purim. I look forward to the day when the threat of COVID recedes and we can join together at 50 North Avenue... *chadesh yameinu k'kedem!*

Best wishes for a healthy and productive 2021,

Tom Grimaldi

Co-President



THOUGHTS FOR TU B'SHEVAT

While the sage Choni was walking along a road, he saw a man planting a carob tree. Choni asked him: "How long will it take for this tree to bear fruit?" "Seventy years," replied the man. Choni then asked: "Are you so healthy a man that you expect to live that length of time and eat its fruit?" The man answered: "I found a fruitful world because my ancestors planted trees for me. Likewise, I am planting for my children."—Taanit 23a

Shimon bar Yochai taught that "if you are holding a sapling in your hand and someone says that the Messiah has drawn near, first plant the sapling, and then go and greet the Messiah." —Avot d'Rebbe Natan 31b

[The Torah compares humans to trees] because, like humans, trees have the power to grow. And as humans have children, so trees bear fruit. And when a human is hurt, cries of pain are heard throughout the world, so when a tree is chopped down, its cries are heard throughout the world. —Rashi



A MESSAGE FROM SISTERHOOD



Dear Friends,

I hope everyone has been feeling well and doing well. We had quite an eventful Chanukah, with Sisterhood very busy spreading light, and cheer, and goodies. The Chanukah Comedy Zoom was a lot of fun, thanks to Tom Grimaldi & Sons for producing it, and to the two comedians, Jeremy Schaftel and Eli Lebowicz. Just what we all needed – a good laugh!

Sisterhood was tasked with distributing Chanukah candles to the entire congregation, and this was achieved with some awesome volunteers: Laurie and Chaim Greenberg, Jenny Choi and Marc Bessler, Terri Levin-Miller, Ellen Kracko, Frimet Herstic, and yours truly. A limited number of candles were mailed out, with assistance from Steven Neustadter in the office.

Ellen Kracko spearheaded the making of Chanukah goody-bags for Anshe children, with assistance from her granddaughters Nechama and Simi, and with lovely Chanukah cards designed by AnnBeth Cohen included in the bags. On Sunday, December 13, 2020 Lee Katz and I helped Ellen, as parents drove or walked by to pick up bags for their children. We were so lucky (B”H) to have beautiful weather, with snow in the forecast for the following week.

We restarted the phone calling initiative, sent some Mitzvah Meals, and distributed bags of latkes and applesauce to some of the seniors in our community. We will continue to reach out to everyone, and hope you continue through the winter, healthy and strong.

B'Shalom,

Joanne Wiesner-Steiner

Sisterhood President



SUNSHINE CARDS

*To Lenore Levin, Congratulations, great-grandmother! from:
Honey & Sol Neier and Charlotte & Jerry Lovich*

*To Jenny, Asher and Noam Apsan, Mazal Tov on the birth of
Sarit Leah, from: Charlotte & Jerry Lovich,
and the Anshe Sholom Sisterhood*

*To Chana, Yosef and Leib Peysin, Mazal Tov on the birth
of Nina, from: Charlotte & Jerry Lovich,
and the Anshe Sholom Sisterhood*

*To Marlene & Armand Lerner, and
to Elanit and Steven Hirsch, Mazal Tov on the birth
of David Jonathan Hirsch, from: Helene Tankell*

*To grandparents, Terri & Ted Miller, and great-grandmother
Lenore Levin, Mazal Tov on the birth of twin girls, Hadar
and Shaked, from: The Anshe Sholom Sisterhood*

*To Diane Markowitz, Refuah Shleimah, from:
Charlotte & Jerry Lovich, and the Anshe Sholom Sisterhood*

*To Prof. Harvey Sober, Refuah Shleimah, from:
Honey & Sol Neier*



MEMORIAL CARDS

*To Aileen Klinger, on the loss of beloved sister-in-law,
from: Shoshana Fayon*

*To Rabbi Evan Hoffman, in memory of grandfather
Harold Hoffman, from: Gertrude Goldstein, Ruth Grayson,
Lee Katz, Bobby Mehler, Carin & Jason Mehler,
Honey & Sol Neier, Steven & Debra Neustadter,
Wendy Packer, and Joanne Wiesner-Steiner.*

*To Dr. Martin Hoffman, on the loss of beloved father,
Harold, from: Ruth Grayson*

*To Ilissa Herskowitz in memory of beloved mother
Marian, from: Norma Kessler*



Some participating well-known retailers are:

- Bed, Bath & Beyond • Starbucks
- Stop & Shop • Shop Rite • Macy's • Staples
- Gap & Old Navy ... and many, many more!

**No extra charge to you! Great gift idea!
Anshe Sholom gets the dividend!**

**Call Ruth Grayson, 914-632-4555,
or the office, 914-632-9220.**

חנוכה 2020/5781



LOOKING BACK ... A TASTE OF CHANUKAH CELEBRATION AT ANSHE SHOLOM





11th District Legislator
TERRY CLEMENTS
Proudly serving Pelham, Pelham Manor, New Rochelle



Keeping You Informed

NYS COVID-19 Vaccine Distribution Information ***As of Dec. 22, 2020**

New York State began receiving its first deliveries of COVID-19 doses last week and the first New Yorkers have already begun to be vaccinated.

Governor Andrew Cuomo has laid out the following guidelines for the distribution of the vaccines in New York:

PHASE-ONE VACCINE RECIPIENTS:

- High-risk health care workers (i.e. hospital and emergency room workers, ICU staff and pulmonary department staff)
- Long-term care facility staff who interact with patients and the most at-risk long-term care facility patients

PHASE-TWO VACCINE RECIPIENTS:

- First responders
- Teachers and school staff
- Public health workers
- Essential frontline workers that regularly interact with the public
- Individuals in the general population deemed particularly high risk due to comorbidities and health conditions
- Other long-term care facility patients and those living in congregate settings

PHASE-THREE VACCINE RECIPIENTS:

- Individuals over 65 years of age
- Individuals under 65 years of age with high-risk comorbidities and health conditions

PHASE-FOUR VACCINE RECIPIENTS:

- All other essential workers

PHASE-FIVE VACCINE RECIPIENTS:

- Healthy adults and children

For more information about the vaccines and their distribution in New York, visit: www.ny.gov/vaccine

Congregation Anshe Sholom *Golden Group*

Dear Friends,

I hope many of my Golden Group, and other congregation members, saw December's Zoom presentation by New Rochelle artist Fred Spinowitz.

It was quite entertaining and very informative. I'm hoping to resume actual meetings in 2021, with interesting topics and speakers, but with all of you physically present in the synagogue.

Let's hope we can get our vaccine shots soon and all be together again in 2021! Meanwhile, stay safe.



Best always,

Marlene Lerner



”כָּל מַחְלָקַת שְׁהִיא
לְשֵׁם שָׁמַיִם,
סוֹפָהּ לְהִתְקִים
וְשֵׁינָהּ לְשֵׁם שָׁמַיִם,
אֵין סוֹפָהּ לְהִתְקִים.”
משנה אבות ה'ז'

Every argument that is
for [the sake of] heaven,
is destined to endure.
But if it is not
for [the sake of] heaven —
it is not destined to endure.
Mishna Avot 5:17

DONATIONS

In Memory of ...

To Rabbi Evan Hoffman and family, on the loss of your beloved grandfather, Dr. Harold Hoffman, from: Jeffrey & Gloria Gordon, Constance Levi, Honey & Sol Neier, Debi & Steven Neustadter, Randi Weingarten, Rose Lipshitz, Janet & Gary Waller

To Dr. Martin Hoffman, on the loss of your beloved father, Dr. Harold Hoffman, from: Randi Weingarten, Rose Lipshitz

To Sam Brotmeyer, in loving memory of your mother, our dear Aunt, Judie, from: Tracy Powell-Rudy and Brett Wolff

In Honor of ...

To Lenore Levin, Congratulations great grandmother, on birth of twin girls, from: Constance Levi

To Terry and Ted Miller, Congratulations, grandparents of twin girls, from: Constance Levi

Refuah Shlei'mah — Get Well

To Kim Flaum, from: Bobby Mehler

To Sue Merims, from: The Anshe Sholom Board of Directors

David Evan Hirsch Library

To Marlene & Armand Lerner, Congratulations on the birth of grandson, David Jonathan Hirsch, from: Joan & Leon Ashner, Rose Lipshitz, Randi Weingarten, Diane Steinfink, and the Anshe Sholom Sisterhood

To Elanit & Steven Hirsch, Congratulations on the birth of beloved son, David Jonathan Hirsch, from: Joan & Leon Ashner, Fany & Sholomo Dubi, and the Anshe Sholom Sisterhood

honor your loved ones
by buying a plaque
for a pew seat in the shul
\$360 per seat

A TORAH MINUTE

There are four conditions that have to be met in order for prayer to be accepted.

The first condition is that our prayer must resemble the beseeching of the poor man who is knocking on a door asking for food. The second condition is that we must direct our prayer to the source of this mercy, which is the Holy One blessed be He. Thirdly, it must be prayed at a time which is propitious for prayers to be heard and finally, the fourth condition is that the prayer must spell out accurately its request, with no possibility of misinterpretation.

Please let your family, friends and colleagues know about this important website. They can sign up to receive these daily messages at:
<http://www.atorahminute.com>

IN HONOR OF TU B'SHEVAT Consider a Donation ...



ANSHE SHOLOM'S TREE OF LIFE

In our lobby we have a golden Tree of Life. Leaves and bricks can be dedicated in honor of a loved one or in honor of a family simcha or to commemorate any occasion. It is a beautiful way of permanently connecting a special someone or family members or a milestone event with our beloved Shul.

LEAF \$250 – members • \$300 – non-members
BRICK \$1,000 – member • \$1,200 – non-members

Contact our office for more information:
(914) 632-9220



THE SISTERHOOD OF CONGREGATION ANSHE SHOLOM
50 North Avenue New Rochelle NY 10805

**PURIM is just
around the corner!**

Once again Sisterhood will be preparing Mishloach Manot bags for the congregation.
Every member of the shul will receive one bag,
as well as a personalized note indicating who honored them.
For a donation of \$180, you can send greetings to the entire congregation.
Individual greetings are \$10. Recipients living out of town, or not affiliated with Anshe Sholom,
will receive a card in lieu of a Mishloach Manot bag.
Your participation in this program helped support Sisterhood in its 104th remarkable year.

Please send your order, with payment, by **MONDAY, FEBRUARY 8TH.**
Check should be made payable to: **THE SISTERHOOD OF CONGREGATION ANSHE SHOLOM.**

Mishloach Manot will be available for pick-up after Purim Services on **Thursday evening, February 25th and Friday morning, February 26th.** After that, bags can be picked up the following week (Monday, Wednesday, or Friday from 11 Am-2 PM) at the synagogue office. Questions? Contact me at 914-806-3410 or the shul office, 914-632-9220.

Chag Purim Sameach! Joanne Wiesner-Steiner, Sisterhood President



THE SISTERHOOD OF CONGREGATION ANSHE SHOLOM
Mishloach Manot Order Form
DUE, WITH PAYMENT, BY FEBRUARY 8TH 2021

Your Name _____

Your phone number _____

____ **1st OPTION:** Please send Mishloach Manot to each family in the congregation.
I've enclosed \$180.

OR

____ **2nd OPTION:** Please send Mishloach Manot to people listed below.

I have enclosed \$10 for each basket.

of baskets _____ @ \$10 = _____.

Total Amount enclosed: _____

I've listed names of specific individuals below. Names of specific people I'm sending Mishloach Manot to:



BE HAPPY, ADAR IS COMING ... MISHENICHNAS ADAR, MARBIM B'SIMCHA מִשְׁנִיחֵנָּס אָדָר, מְרַבִּים בְּשִׂמְחָה



Parshat Zachor

The annual reading of Parshat Zachor on the Sabbath before Purim is considered to be a fulfillment of the Biblical command to remember what the Amalekites did to our ancestors long ago. The synagogue is usually more crowded on Shabbat Zachor than it is on a typical Shabbat. People recognize the importance of the reading and do not want to miss it.

Many will recall that our synagogue shut down on account of the pandemic just before last year's Parshat Zachor. Instead, we read the Scriptural portion over Zoom shortly before Kabbalat Shabbat. In late August, when we read Parshat Ki Tetze, we had in mind to fulfill Parshat Zachor when we read the relevant text as part of the annual Torah cycle. It will be especially meaningful this year to observe the annual rite of Parshat Zachor on the one-year anniversary of the pandemic's arrival in New Rochelle.

Laws and Customs of Purim



The **Fast of Esther** is observed on 13 Adar, the day before Purim. This year it falls on **Thursday, February 25**. It is a daytime fast only, beginning at **5:23AM** and concluding at **6:22PM**. The

fast recalls the three-day fast mentioned in the Book of Esther as well as the fast observed by Jewish soldiers in preparation for their battle against anti-Semitic forces. During the Shacharit service (7:00AM) we recite Selichot. Mincha will be at 5:20PM, and includes Torah and Haftarah readings.



Purim begins on Thursday night, **February 25**. Maariv will be at **6:15PM**, followed by the reading of **Megillat Esther** at **6:30PM**. Though the fast ends at

6:22PM, it is customary not to break one's fast until after the conclusion of the Megillah reading. There will be a **late Megillah reading**, likely at 8:30PM. **Please consult with Rabbi Hoffman for the exact time.**

It is a **mitzvah to hear the Megillah reading twice**, once at night and once during the day. *The daytime reading is of far greater halachic significance.* **Shacharit** will be at **7:00AM**, followed by the **Megillah reading** at **7:30AM**. It is necessary to hear all the words of the Megillah in proper order, which means that it is important not to arrive late for the reading. It is appropriate to make noise when hearing Haman's name recited, but it is very important that one not prolong the noise and thereby make it impossible for all in attendance to hear the next few words chanted by the Megillah reader.



It is a mitzvah to give **Mishloach Manot** on Purim day. The mitzvah cannot be fulfilled at any other time. While it is nice to give food packages to a long list of friends, the religious obligation is satisfied by merely giving two ready-to-eat food items to one friend.



It is a mitzvah to give **Matanot l'Evyonim**, gifts to the poor. The obligation is to give two poor people the amount of money needed for each of them to purchase a holiday meal. It is estimated that one should give \$20 to each poor person. In addition, it is customary on Purim not to turn away any charity collector emptyhanded, even if only to give each one a token amount. It is also customary to give Machatzit Ha-Shekel in remembrance of the half-shekel payment remitted during Temple days. The custom is done by giving three silver half-dollars to tzedakah.

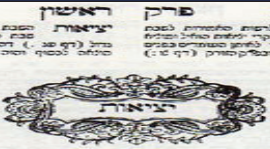







It is a mitzvah to eat a **Purim Seudah** (feast). Typically, this is done late in the afternoon. However, because Purim falls on a Friday this year, it is preferable not to eat the Seudah too close to Shabbat, as that would ruin one's appetite for the Friday night meal. Accordingly, it is best to eat a large breakfast, inclusive of bread, and thereby fulfill the Seudah obligation. The Al ha-Nissim prayer is included in the Grace after Meals and Amidah on Purim.



JANUARY 2021

TEVET/SHEVAT 5781

Sunday	Monday	Tuesday	Wednesday	Thursday	Friday	Saturday
 <p style="text-align: center; color: white; font-weight: bold;">DAF YOMI via ZOOM</p> <p style="text-align: center; color: white;">Sundays – Friday 4:00PM</p>			 <p style="text-align: center; font-weight: bold;">Daily Services</p> <p style="text-align: center; font-weight: bold;">JANUARY</p> <p>Sundays 8:00AM</p> <p>Mondays–Fridays 7:00AM</p> <p>Saturdays 9:00AM</p>		<p>1 17 Tevet</p>  <p>4:20 PM</p>	<p>2 18 Tevet</p> <p style="font-weight: bold; font-size: 1.2em;">VAYECHI</p> <p>Shacharit 9:15 AM</p> <p>Mincha 4:10 PM</p> <p>Havdalah 5:24 PM</p>
<p>3 19 Tevet</p> <p style="text-align: center;">Shacharit 8:00 AM</p>	<p>4 20 Tevet</p> <p style="text-align: center;">Class w/R. Hoffman History 8:15PM</p> <p style="text-align: center;">Shacharit 7:00 AM</p>	<p>5 21 Tevet</p> <p style="text-align: center;">Shacharit 7:00 AM</p>	<p>6 22 Tevet</p> <p style="text-align: center;">Parshah Class w/R. Kracko 7:00PM</p> <p style="text-align: center;">Shacharit 7:00 AM</p>	<p>7 23 Tevet</p> <p style="text-align: center;">Class w/R. Hoffman Chumash 8:15PM</p> <p style="text-align: center;">Shacharit 7:00 AM</p>	<p>8 24 Tevet</p>  <p>4:27 PM</p> <p>Shacharit 7:00 AM</p> <p>Eve. Service 4:30 PM</p>	<p>9 25 Tevet</p> <p style="font-weight: bold; font-size: 1.2em;">SHEMOT</p> <p>Shacharit 9:15 AM</p> <p>Mincha 4:20 PM</p> <p>Havdalah 5:31 PM</p>
<p>10 26 Tevet</p> <p style="text-align: center;">Shacharit 8:00 AM</p>	<p>11 27 Tevet</p> <p style="text-align: center;">Class w/R. Hoffman History 8:15PM</p> <p style="text-align: center;">Shacharit 7:00 AM</p>	<p>12 28 Tevet</p> <p style="text-align: center;">Shacharit 7:00 AM</p>	<p>13 29 Tevet</p> <p style="text-align: center;">Parshah Class w/R. Kracko 7:00PM</p> <p style="text-align: center;">Shacharit 7:00 AM</p>	<p>14 1 Shevat</p> <p style="font-weight: bold;">ROSH CHODESH</p> <p style="text-align: center;">Class w/R. Hoffman Chumash 8:15PM</p> <p style="text-align: center;">Shacharit 7:00 AM</p>	<p>15 2 Shevat</p>  <p>4:34 PM</p> <p>Shacharit 7:00 AM</p> <p>Eve. Service 4:35 PM</p>	<p>16 3 Shevat</p> <p style="font-weight: bold; font-size: 1.2em;">VA'ERA</p> <p>Shacharit 9:15 AM</p> <p>Mincha 4:25 PM</p> <p>Havdalah 5:38 PM</p>
<p>17 4 Shevat</p> <p style="text-align: center;">Shacharit 8:00 AM</p>	<p>18 5 Shevat</p> <p style="font-weight: bold;">MLK. Jr Day</p> <p style="text-align: center;">Class w/R. Hoffman History 8:15PM</p> <p style="text-align: center;">Shacharit 8:00 AM</p>	<p>19 6 Shevat</p> <p style="text-align: center;">Shacharit 7:00 AM</p>	<p>20 7 Shevat</p> <p style="text-align: center;">Parshah Class w/R. Kracko 7:00PM</p> <p style="text-align: center;">Shacharit 7:00 AM</p>	<p>21 8 Shevat</p> <p style="text-align: center;">Class w/R. Hoffman Chumash 8:15PM</p> <p style="text-align: center;">Shacharit 7:00 AM</p>	<p>22 9 Shevat</p>  <p>4:42 PM</p> <p>Shacharit 7:00 AM</p> <p>Eve. Service 4:45 PM</p>	<p>23 10 Shevat</p> <p style="font-weight: bold; font-size: 1.2em;">BO</p> <p>Shacharit 9:15 AM</p> <p>Mincha 4:30 PM</p> <p>Havdalah 5:46 PM</p>
<p>24 11 Shevat</p> <p style="text-align: center;">Shacharit 8:00 AM</p>	<p>25 12 Shevat</p> <p style="text-align: center;">Class w/R. Hoffman History 8:15PM</p> <p style="text-align: center;">Shacharit 7:00 AM</p>	<p>26 13 Shevat</p> <p style="text-align: center;">Shacharit 7:00 AM</p>	<p>27 14 Shevat</p> <p style="text-align: center;">Parshah Class w/R. Kracko 7:00PM</p> <p style="text-align: center;">Shacharit 7:00 AM</p>	<p>28 15 Shevat</p> <p style="font-weight: bold;">TU B'SHEVAT</p> <p style="text-align: center;">Class w/R. Hoffman Chumash 8:15PM</p> <p style="text-align: center;">Shacharit 7:00 AM</p>	<p>29 16 Shevat</p>  <p>4:51 PM</p> <p>Shacharit 7:00 AM</p> <p>Eve. Service 4:55 PM</p>	<p>30 17 Shevat</p> <p style="font-weight: bold; font-size: 1.2em;">BESHALLACH</p> <p>Shacharit 9:15 AM</p> <p>Mincha 4:40 PM</p> <p>Havdalah 5:55 PM</p>
<p>31 18 Shevat</p> <p style="text-align: center;">Shacharit 8:00 AM</p>						

FEBRUARY 2021

SHEVAT/ADAR 5781

Sunday	Monday	Tuesday	Wednesday	Thursday	Friday	Saturday
	1 19 Shevat  Class w/R. Hoffman History 8:15PM Shacharit 7:00 AM	2 20 Shevat Shacharit 7:00 AM	3 21 Shevat  Parshah Class w/R. Kracko 7:00PM Shacharit 7:00 AM	4 22 Shevat  Class w/R. Hoffman Chumash 8:15PM Shacharit 7:00 AM	5 23 Shevat  5:00 PM Shacharit 7:00 AM Eve. Service 5:05 PM	6 24 Shevat YITRO Shacharit 9:15 AM Mincha 4:50 PM Havdalah 6:04 PM
7 25 Shevat Shacharit 8:00 AM	8 26 Shevat  Class w/R. Hoffman History 8:15PM Shacharit 7:00 AM	9 27 Shevat Shacharit 7:00 AM	10 28 Shevat  Parshah Class w/R. Kracko 7:00PM Shacharit 7:00 AM	11 29 Shevat  Class w/R. Hoffman Chumash 8:15PM Shacharit 7:00 AM	12 30 Shevat  5:08 PM ROSH CHODESH Shacharit 7:00 AM Eve. Service 5:10 PM	13 1 Adar ROSH CHODESH MISHPATIM/ SHABBAT SHEKALIM Shacharit 9:15 AM Mincha 5:00 PM Havdalah 6:12 PM
14 2 Adar Shacharit 8:00 AM	15 3 Adar President's Day  Class w/R. Hoffman History 8:15PM Shacharit 8:00 AM	16 4 Adar Shacharit 7:00 AM	17 5 Adar  Parshah Class w/R. Kracko 7:00PM Shacharit 7:00 AM	18 6 Adar  Class w/R. Hoffman Chumash 8:15PM Shacharit 7:00 AM	19 7 Adar  5:16 PM Shacharit 7:00 AM Eve. Service 5:20 PM	20 8 Adar TERUMAH SHABBAT ZACHOR Shacharit 9:15 AM Mincha 5:10 PM Havdalah 6:20 PM
21 9 Adar Shacharit 8:00 AM	22 10 Adar  Class w/R. Hoffman History 8:15PM Shacharit 7:00 AM	23 11 Adar Shacharit 7:00 AM	24 12 Adar  Parshah Class w/R. Kracko 7:00PM Shacharit 7:00 AM	25 13 Adar Fast of Esther 5:23 PM BEGINS 6:22 PM ENDS Shacharit 7:00 AM Mincha 5:20 PM Early Megillah 6:30 PM Late Megillah 8:30 PM	26 14 Adar  5:25 PM  Shacharit 7:00 AM Megillah 7:30 AM Eve. Service 5:30 PM	27 15 Adar TETZAVEH Shacharit 9:15 AM Mincha 5:15 PM Havdalah 6:29 PM
28 16 Adar Shacharit 8:00 AM	 Daily Services FEBRUARY Sundays 8:00AM Mondays–Fridays 7:00AM Saturdays 9:00AM		 DAF YOMI via ZOOM Sundays – Friday 4:00PM			

Congregation Anshe Sholom

50 North Avenue • New Rochelle, NY 10805

(914) 632-9220 • fax (914) 632-8182

E-mail us at: asnewroch@aol.com

Evan Hoffman Rabbi
Dr. Marc Bessler & Dr. Thomas Grimaldi Co-Presidents
Honey Neier 1st Vice President
Laurie Kracko 2nd Vice President
Dr. Morris Schoeneman Treasurer
Elihu Massel Secretary
Joanne Wiesner-Steiner Sisterhood President
Ellen Kracko Bulletin Editor
Amy Erani Bulletin Design & Layout

OR CURRENT RESIDENT

VISIT OUR WEBSITE • anshesholomnewrochelle.org



FOR SALE BY OWNER

Two sets of crypts in the Sanctuary of Abraham and Sarah at Cedar Park Beth-El Cemetery in Paramus, New Jersey. Both sets in building #3, 1st floor, level 3.

Couch Crypt	True Companion Crypt
#7679 & 7680	#7691 & 7692
\$32,000	\$25,500

CONTACT: BARBARA BROWNSTEIN
bsbrownst@aol.com

Law Office of
Michael Resnick
270 North Avenue, Suite 811
New Rochelle, NY 10801


Phone (646) 599-1359
michael@resnicklawyer.com
www.resnicklawyer.com



David Mener, MD
*Board certified Otolaryngologist
Head and Neck Surgeon*

145 Huguenot Street
Suite 610
New Rochelle, NY 10801
Office: (914) 235-1888
entandallergy.com/mener

**Book Online, Anytime! at entandallergy.com/booknow
or Call us today. See us today!® 1-855-ENTA-DOC**